

## TW21 FORKLIFT TRUCK

**50 HP mechanical engine and 2.100 kg lifting capacity. Compact size, 4x4 WD wheel motors and no maintenance needed**

The TW21 forklift truck is a 50 HP, wheel motors based model with a 2.100 kg lifting capacity. Its design represents a technological breakthrough over its predecessor, the TH-210.

The implementation of hydraulic wheel motors technology provides notable advantages: huge maintenance costs reduction; higher efficiency of the 4x4 traction; grip enhancing; better optimization of the weight distribution and a lower fuel consumption.

The wheel motor technology is a leap over the differential axles system. The power distribution in the four wheels of the vehicle is controlled by an anti-skid block system that synchronizes the effort of each wheel with greater efficiency in grip and fuel costs. In addition, it is a simpler system, with fewer mechanical components which allows it to be a lighter vehicle. Finally, it requires practically no maintenance.

Another important feature is the cooling system. There are two independent radiators: one for the combustion engine and other for the hydraulic circuit. This additional cooling capacity guarantees 50 degrees oil temperature, which extends the forklifts useful time.

*The driving is so smooth that it is difficult to distinguish a senior driver from an amateur one.*

The TW21 forklift truck is powered by a Perkins 50 HP Stage III A engine. The choice of this engine is focused on reducing maintenance costs. Other engines with electronic control unit are more expensive to maintain and also require a costly particles filter regenerations.

The TW21 dimensions are another point to consider. This is a compact forklift 2.1 metres high, 1.7 metres wide and 350 centimetres ground clearance. The size of the wheels, the rear wheel motors and the 24 km/h top speed with the 4WD reveal a very agile forklift. The stability, lightness and the external turning



**In-wheel motor.** Each of the four wheels have hydraulic motor in its axle that performs the traslation movement.



**Zero maintenance.** Lacking differential bridges maintenance is reduced to the minimum. The truck is designed not to fail.



**Compact size.** 2.1 metres in height, 1.7 metres wide with 350 centimetres ground clearance



**High speed.** the 24 km / h top speed with the 4WD reveal a very agile forklift in any workplace.

circle of 3.7 meters define the high maneuverability of the TW21 model. The combination of these measures results in an ideal truck for working indoors and outdoors, in building sites as in cropfields.

In addition, driving is easy and comfortable. For loading and unloading operations, it has an *inching* device installed: a slow approach system that facilitates the precision in the movement of weights.

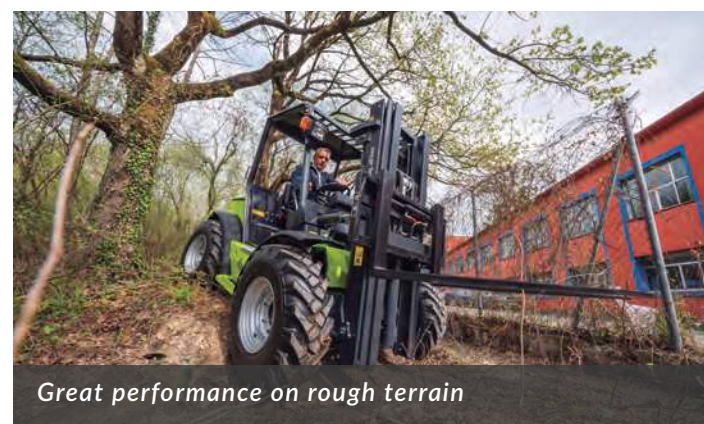
Regarding safety, Agrimac engineers have thoroughly studied the issue of visibility, ensuring that the load is always kept in sight by the operator regardless of its height, avoiding blind spots. In this truck there are none. This has its reading from the point of view of comfort but also from that of security.

The negative brake is also safety oriented. It is an electro-hydraulic brake that activates automatically when the engine stopes. This ensures that the vehicle stands still once the operator has left the

*The Perkins 50 HP engine does not require particle filters or electronic injection.*

driving position.

The TW21 forklift truck is a medium-sized model in the TW series of trucks with in-wheel motors. However, it offers a power and resistance close to the big ones and at the same time, the agility and maneuverability of the little ones, for this reason adapting to any type of task. Versatility is, undoubtedly, one of its great values.



Great performance on rough terrain



Intuitive and easy driving in any situation



Oil display to check the hydrostatic system



Equipped with large wheels to maximize traction

## TW21

GENERAL		Unit
Payload	kg	2.100
Unladen weight	kg	3,490 (With 4 m triplex mast)
ENGINE		Unit
Make / Model	-	Perkins / 404D-22
Power	kW / CV	36,5 / 50
Torque	Nm	139
Cubic capacity	cm <sup>3</sup>	2,200
Number of cylinders	-	4
Revolutions per minute	rpm	2,800
Emissions stage	-	IIIA
Alternator	V-A	12 - 65
Cooling	-	Liquid
RUNNING		Unit
Gearing	-	2 Forward 2 Reverse Slow approach system
Top speed	km/h	24
Gradeability	%	35
Inner turning circle	mm	2,225
Outer turning circle	mm	3,725
Steering	-	Hydraulic with priority valve
Traction	-	4x4
Brakes	-	Hydrostatic to all 4 wheels. Servo to front wheels. Parking system automatic to front wheels
Wheels	-	Front: 11,50/80-15,3 Rear: 10,0/75-15,3
HYDRAULIC SYSTEMS		Unit
Transmission	-	In-wheel motor
Displacement pump		
Flow	l/min	126
Pressure	bar	400
Working pump		
Flow	l/min	35
Pressure	bar	180
TANKS		Unit
Fuel	l	55
Oil	l	55
EQUIPMENT		Unit
Battery	V - Ah	12 - 74
Mast	m	Duplex: 2.5 / 3.14 / 3.6 Triplex: 4.0 / 6.0

## TW21

